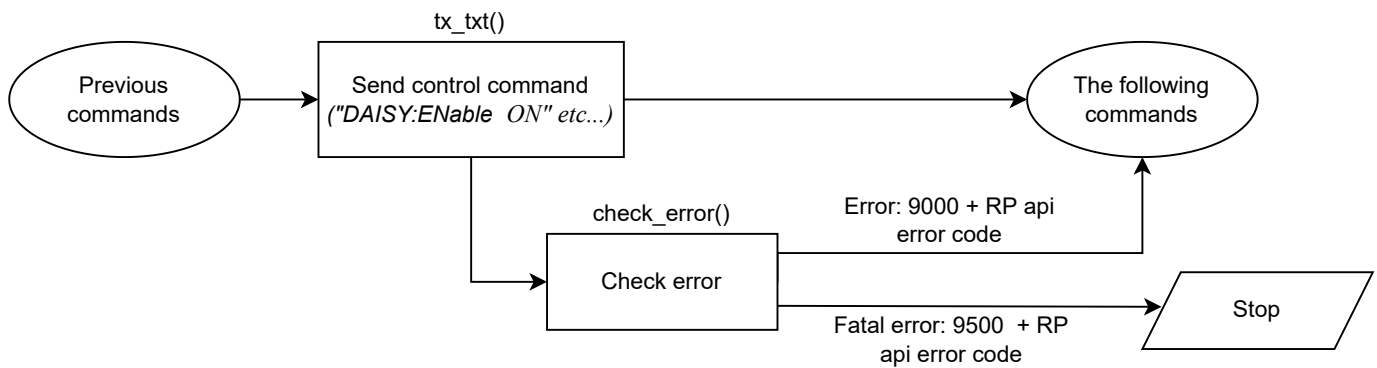


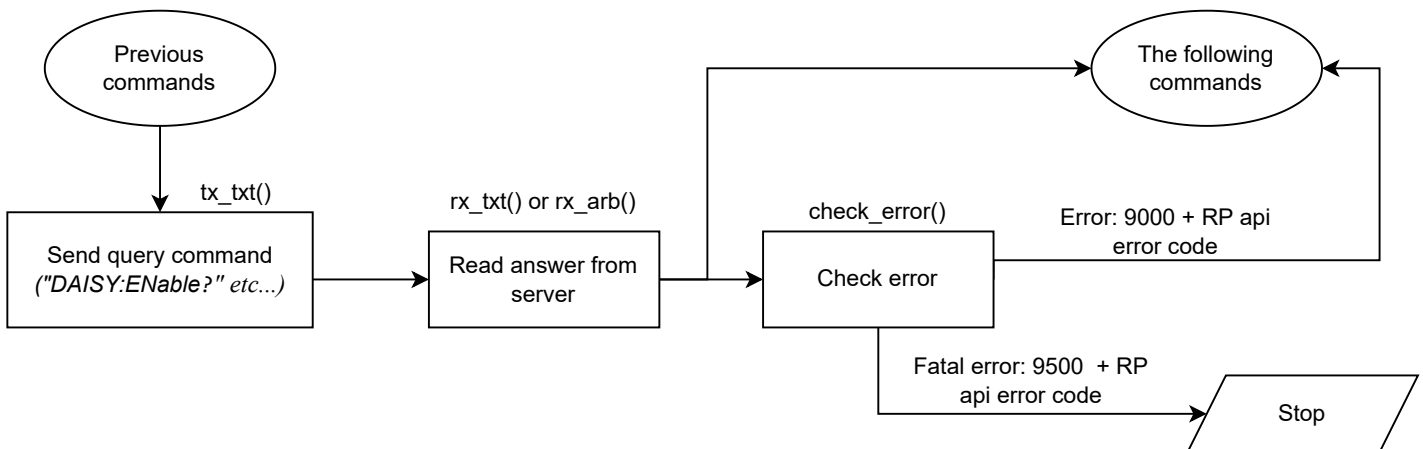
Python command queue (redpitya_sspi.py)

Control commands



- Control commands never return anything
- Error control is performed via Status Byte
- Error checking is optional
- The error code from the api consists of two parts. 9000 or 9500, which indicate that the error is normal or critical, and the api error number. For example: 9500 + RP_EOED = 9501 (Failed to Open EEPROM Device)

Query commands



- Query commands always return data
- Error control is performed via Status Byte
- Error checking is optional
- The data returned by the command can be of two types: binary and text data
- Binary data answer has format: **#<DATA SIZE><BYTES>**. If an error occurs, the response format will be like this: **#0**
- Text data format: **<ANSWER>\r\n** or **<ANSWER>;<ANSWER>;...;<ANSWER>\r\n** (If you're sending multiple commands at once.) If an error occurs, the response format will be like this: **"\r\n"**
- In ASCII mode, data buffers are represented in the form {dd,dd,dd,...,dd}
- The error code from the api consists of two parts. 9000 or 9500, which indicate that the error is normal or critical, and the api error number. For example: 9500 + RP_EOED = 9501 (Failed to Open EEPROM Device)