

redpitaya

Red Pitaya d.o.o.  
Velika pot 22  
5250 Solkan  
Slovenia

[www.redpitaya.com](http://www.redpitaya.com)

**Electrical schematics for:**

**name: STEM250-12**  
**version: V1r1**  
**variant: Production2**

Copyright 2014, Red Pitaya d.o.o. All Rights Reserved.

By exception, this version of document may be freely reproduced, distributed, republished, displayed, posted, transmitted or copied in any form or by any means, as is without modifications in its contents, without the prior written permission of Red Pitaya d.o.o.

Red Pitaya and the Red Pitaya logo are registered trademarks of Red Pitaya d.o.o. All trademarks and trade names are the properties of their respective owners and Red Pitaya d.o.o. disclaims any proprietary interest or right in trademarks, service marks and trade names other than its own.

Red Pitaya is not responsible for typographical or other errors or omissions or for direct, indirect, incidental or consequential damages related to this material or resulting from its use.

Red Pitaya makes no warranty or representation respecting this material, which is provided on an "AS IS" basis.

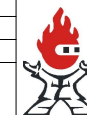
RED PITAYA HEREBY DISCLAIMS ALL WARRANTIES OR LIABILITY OF ANY KIND WITH RESPECT THERETO, INCLUDING, WITHOUT LIMITATION, REPRESENTATIONS REGARDING ACCURACY AND COMPLETENESS, ALL IMPLIED WARRANTIES AND CONDITIONS OF MERCHANTABILITY, SUITABILITY OR FITNESS FOR A PARTICULAR PURPOSE, TITLE AND/OR NON-INFRINGEMENT.

This material is not designed, intended or authorized for use in any applications in which the failure of the product could result in personal injury, death or property damage.

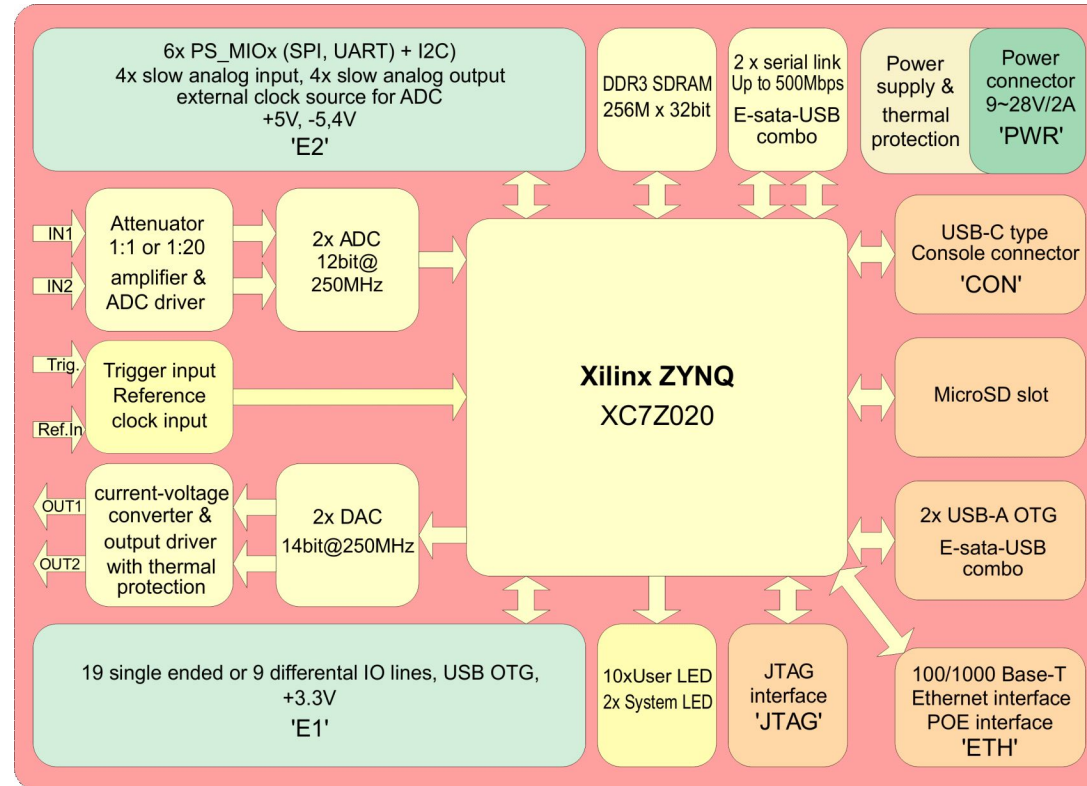
Any party using or selling products for use in any such applications do so at their sole risk and agree that Red Pitaya is not liable, in whole or in part, for any claim or damage arising from such use, and agree to fully indemnify, defend and hold harmless Red Pitaya from and against any and all claims, damages, loss, cost, expense or liability arising out of or in connection with the use or performance of products in such applications.

|              |            |              |             |              |
|--------------|------------|--------------|-------------|--------------|
| Designer:    | Red Pitaya | Document:    |             | Sheet 1 of 9 |
| Drawn By:    | IT015      | Modif. Date: | 1. 06. 2020 | SCHEMATIC    |
| Approved By: | IT004      | Print Date:  | 1. 06. 2020 | Size: A4 H   |

**Red Pitaya 250 Msps: 2ch in 12 bit, 2ch out 14 bit**



redpitaya

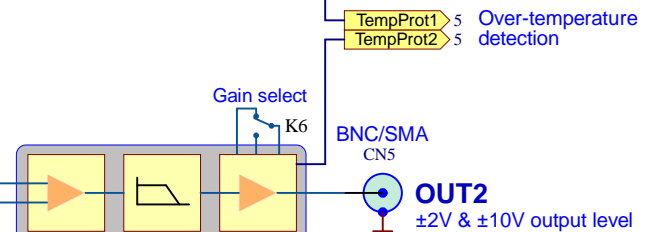
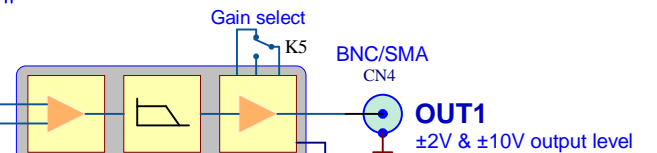
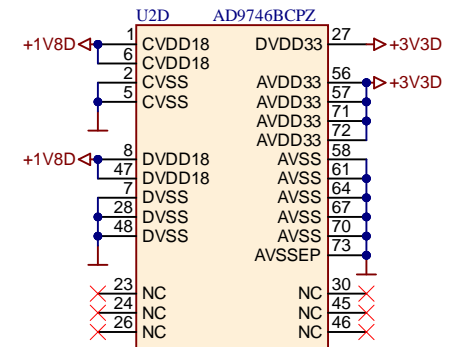
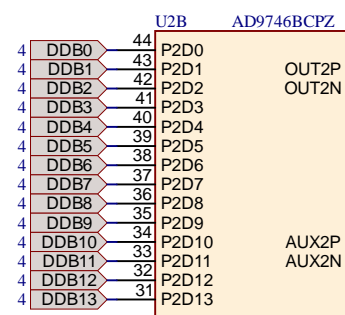
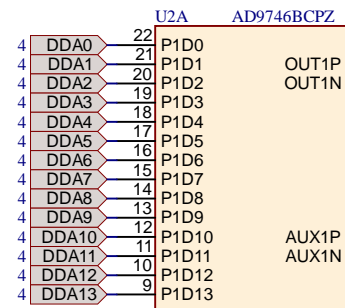
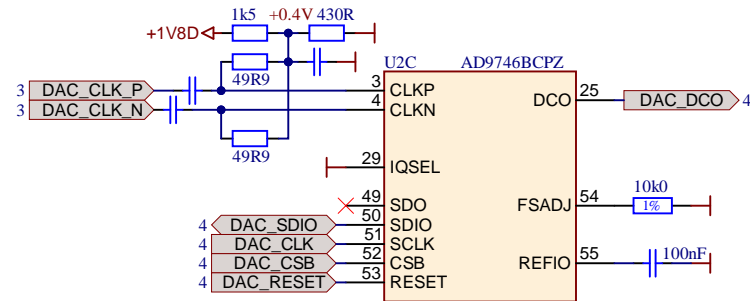
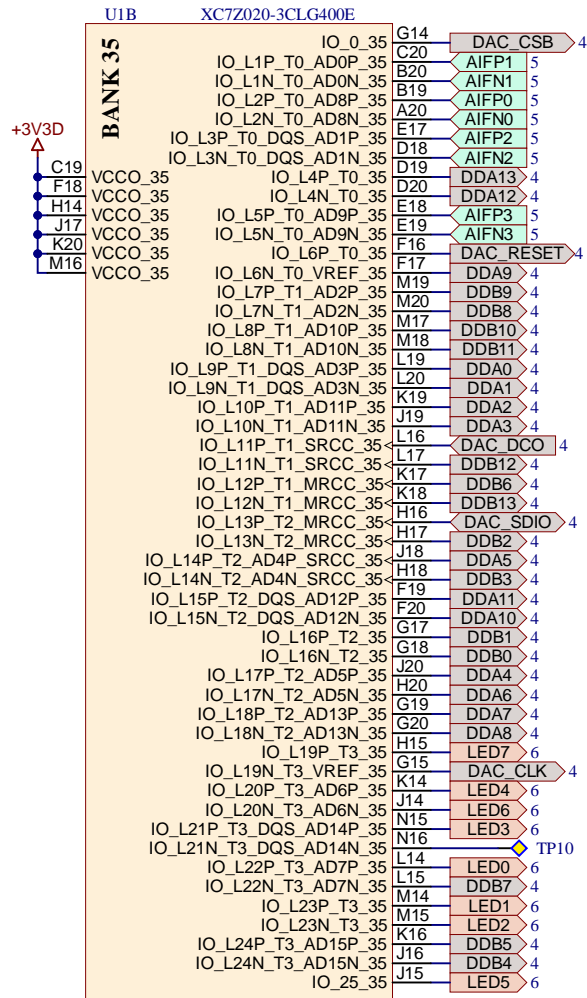


|                      |                          |              |
|----------------------|--------------------------|--------------|
| Designer: Red Pitaya | Document:                | Sheet 2 of 9 |
| Drawn By: IT015      | Modif. Date: 1. 06. 2020 | SCHEMATIC    |
| Approved By: IT004   | Print Date: 1. 06. 2020  | Size: A4 H   |

## STEM250-12 V1r0 block schematics



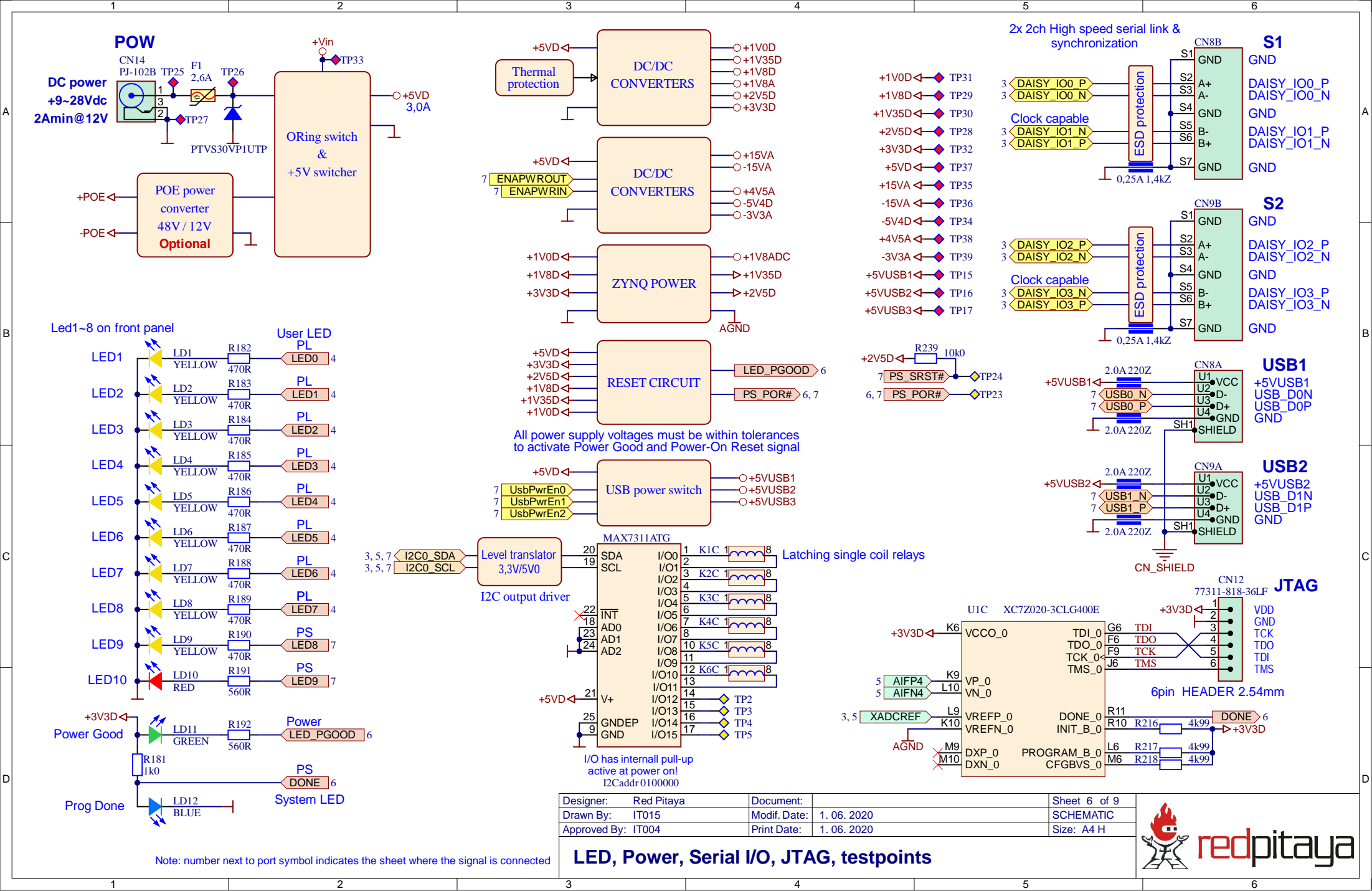


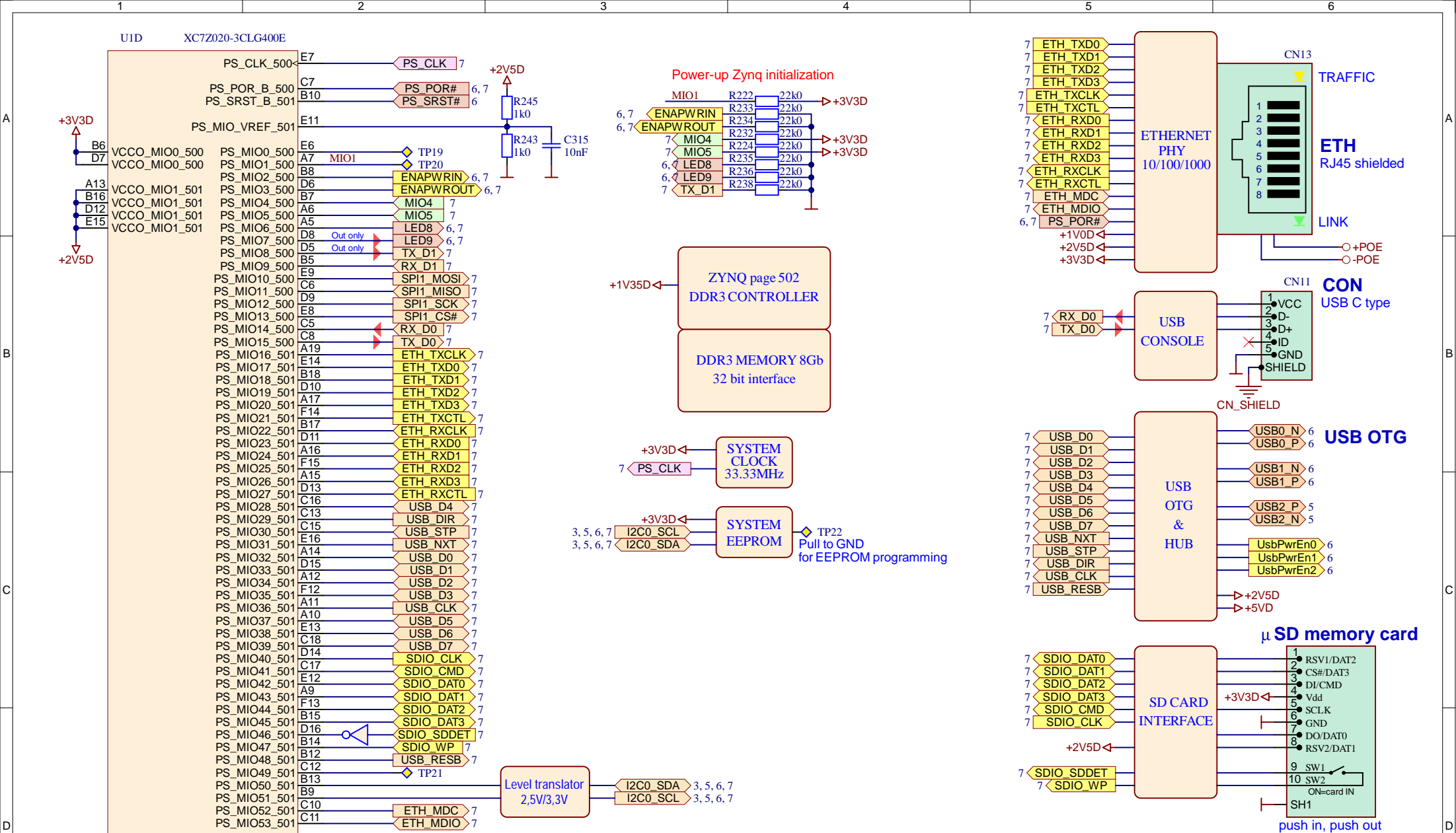


19 single ended or  
9 differential digital I/O  
with 3,3V logic levels







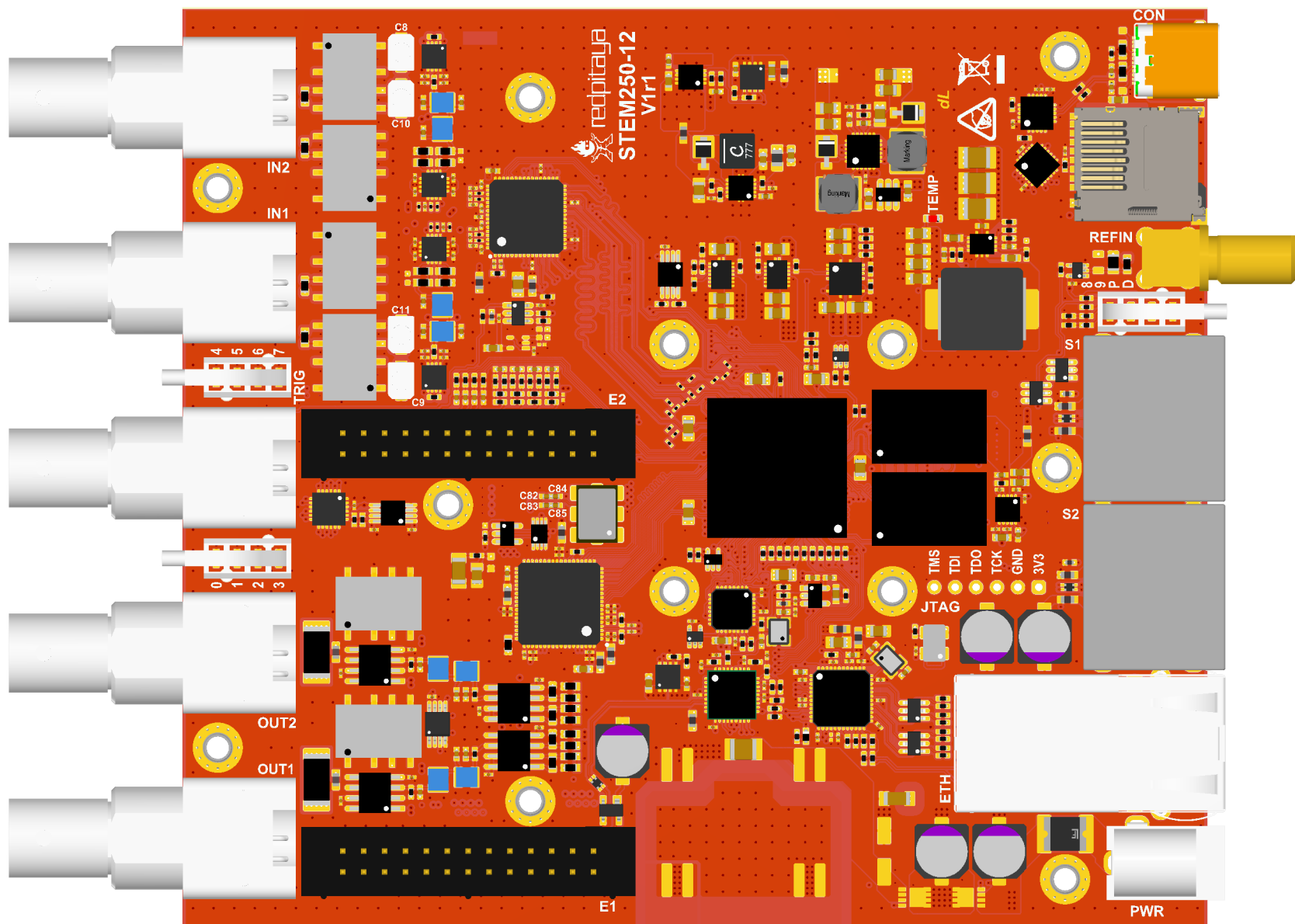


|                      |              |             |              |
|----------------------|--------------|-------------|--------------|
| Designer: Red Pitaya | Document:    |             | Sheet 7 of 9 |
| Drawn By: IT015      | Modif. Date: | 1. 06. 2020 | SCHEMATIC    |
| Approved By: IT004   | Print Date:  | 1. 06. 2020 | Size: A4 H   |


Note: number next to port symbol indicates the sheet where the signal is connected

## Zynq PS bank500 and 501, Ethernet, Console, USB, memory

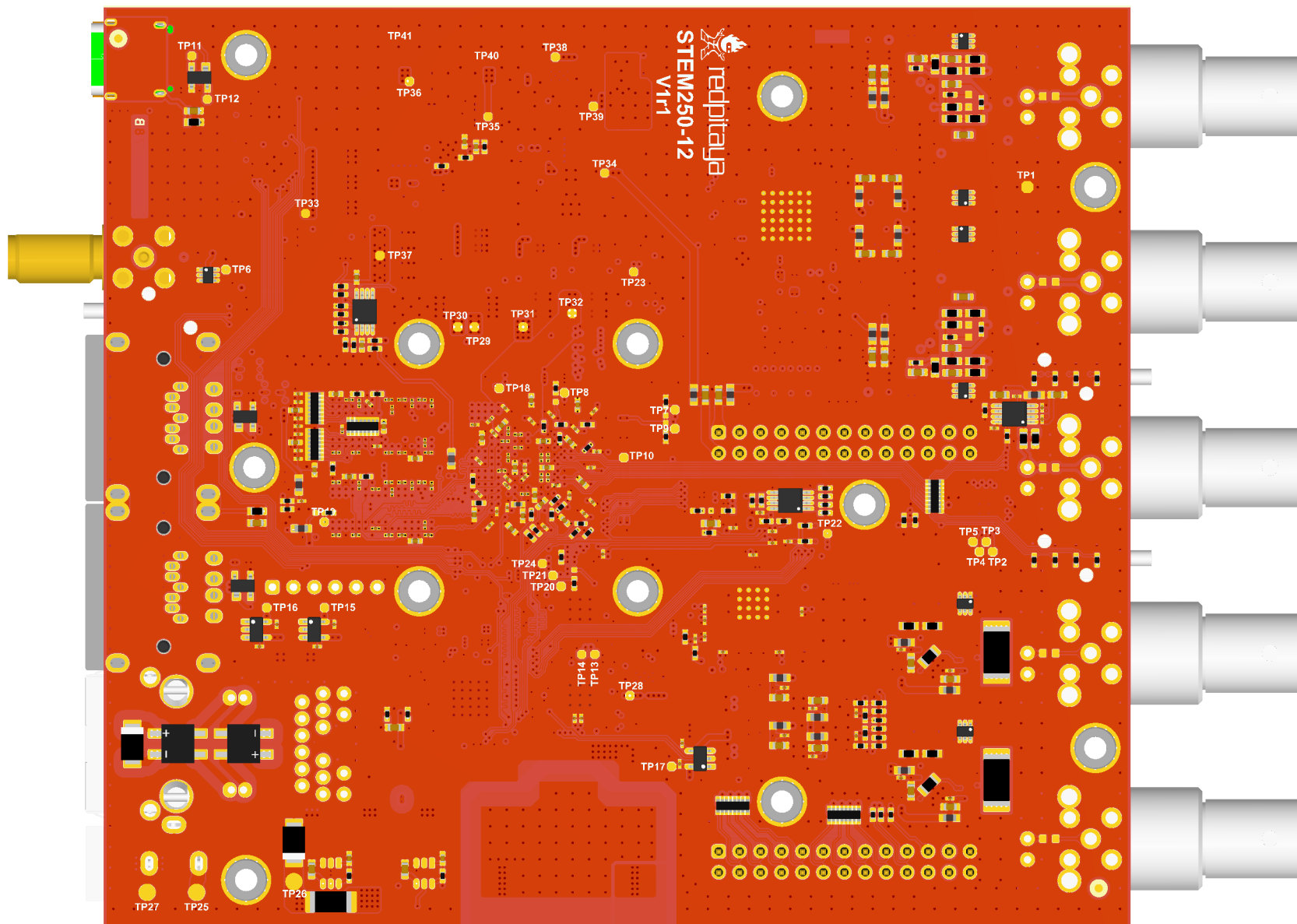





3D view top side

|  |                             |   |
|--|-----------------------------|---|
| Drawn by: IT015                            | Pcb name: <b>STEM250-12</b> |  |
| Approved by: IT004                         | Pcb version: <b>V1r1</b>    |   |
| Release date: 15.12.2019                   | Pcb Code:                   |   |
| File name: <b>5777-DOC_STEM250-12-V1r1</b> |                             |   |
|  |                             | Page 1 of 2 A4 horiz.   |





3D view bottom side

|  |                             |   |
|--|-----------------------------|---|
| Drawn by: IT015                            | Pcb name: <b>STEM250-12</b> |  |
| Approved by: IT004                         | Pcb version: <b>V1r1</b>    |   |
| Release date: 15.12.2019                   | Pcb Code:                   |   |
| File name: <b>5777-DOC_STEM250-12-V1r1</b> |                             |   |
|  |                             | Page 2 of 2 A4 horiz.   |